



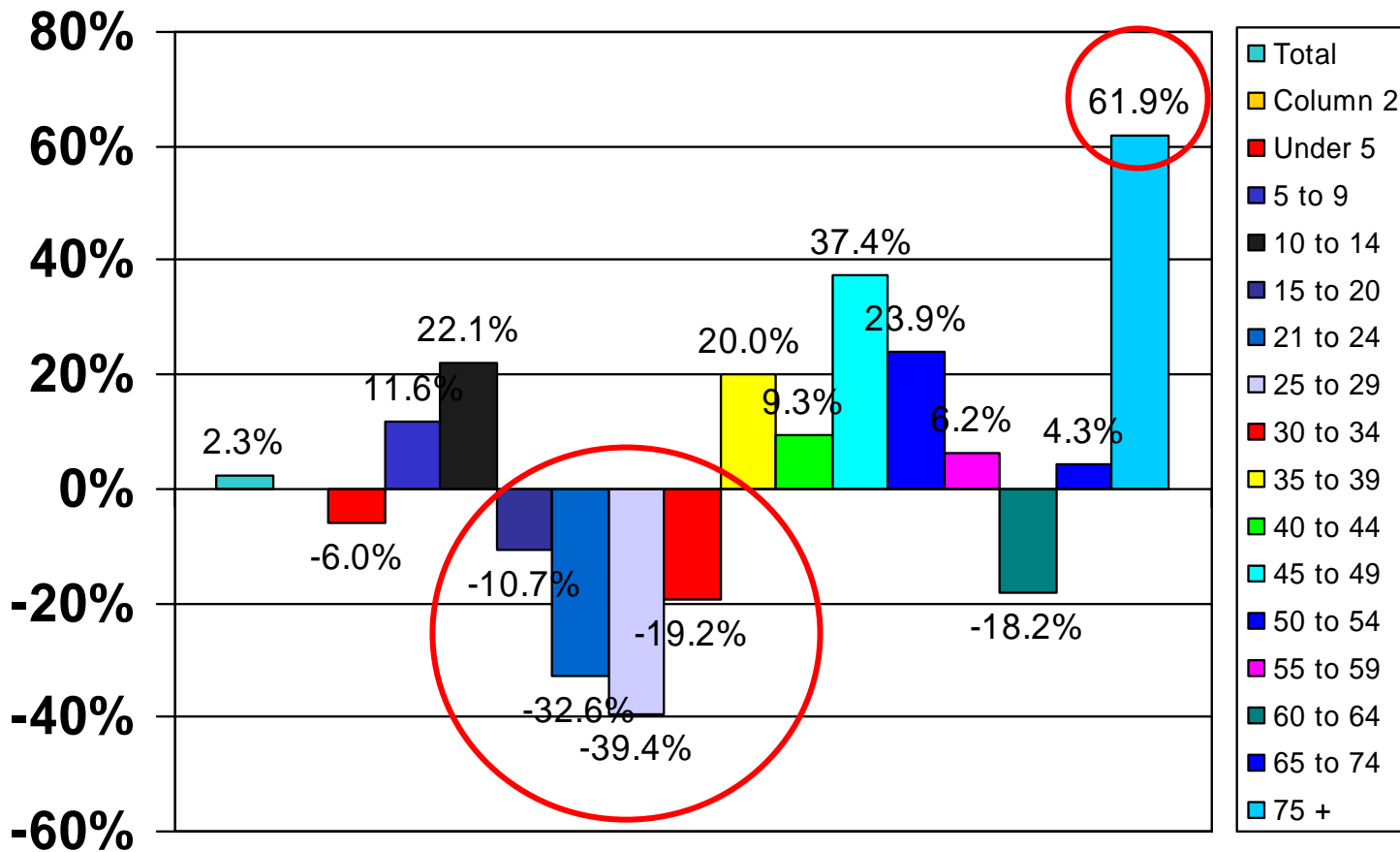
Peabody
Service Summit
June 26, 2008

Collaborative Solutions to Community Needs

Beth Hogan

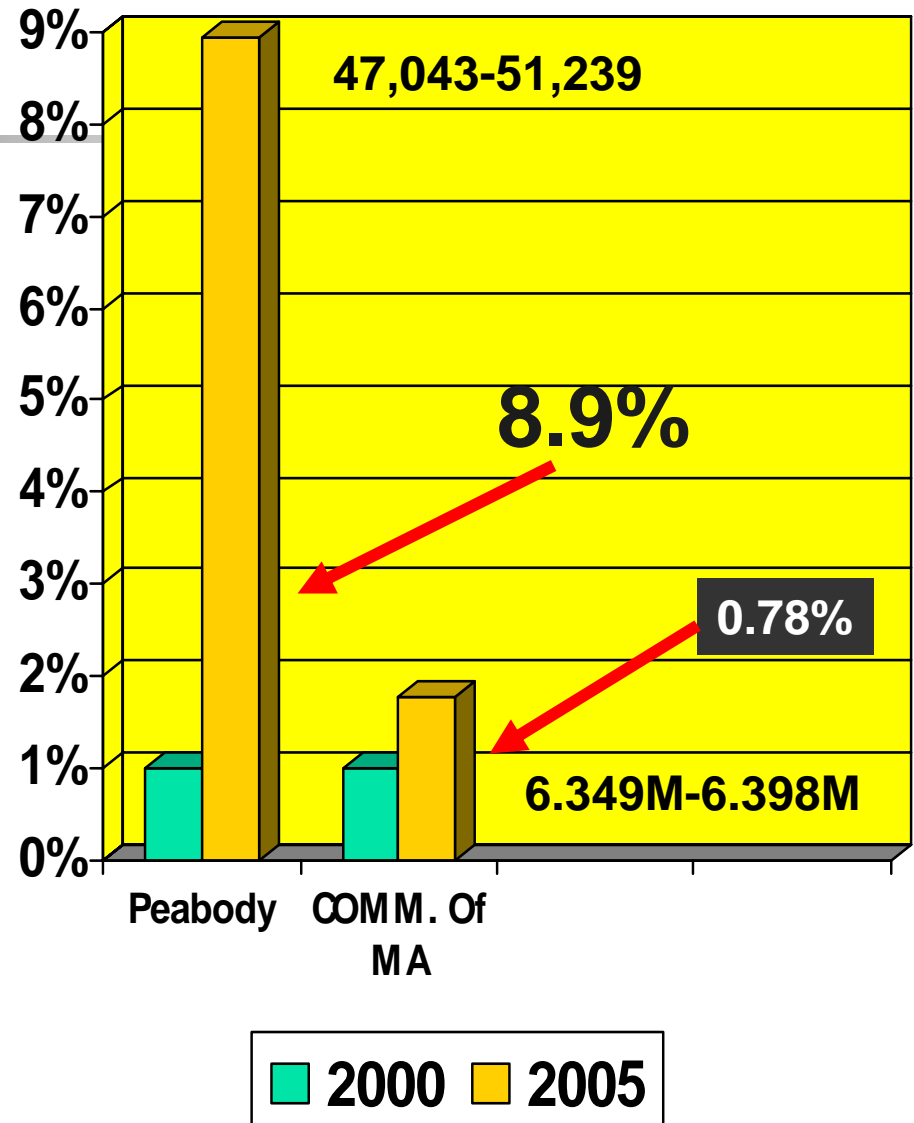
North Shore Community Action
Programs, Inc.

Peabody Population by Age

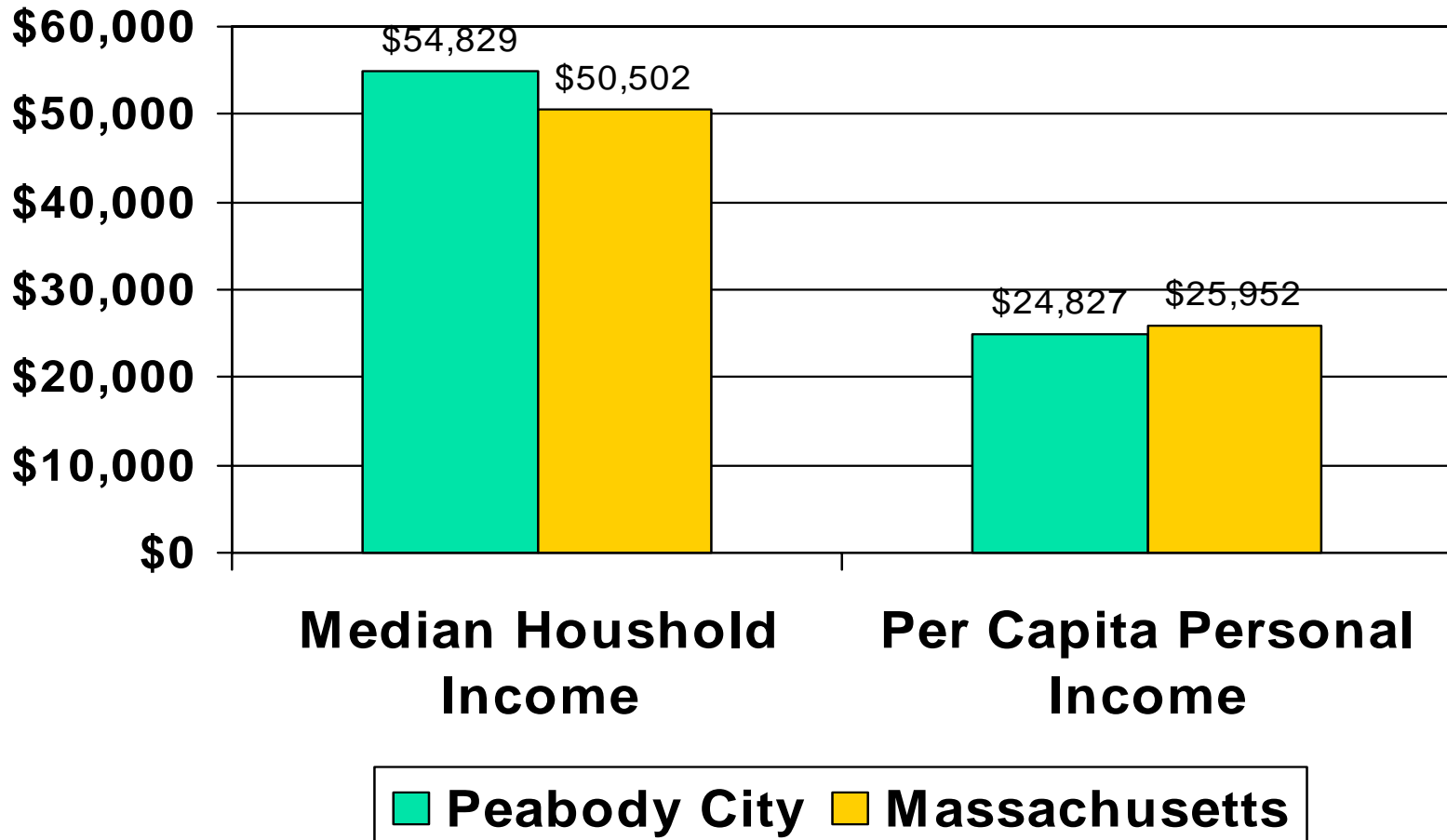


Percent of Peabody Population Change 2000-2005

- Massachusetts population has remained relatively flat
- How to keep younger workers and families in the community
- Peabody's population has grown significantly
 - Brooksby Village
 - Immigrants



Median and per Capita Incomes



Cost of Living on the North Shore

household monthly expenses

housing*	\$1,237
food	\$513
child care	\$1,434
health care	\$327
transportation	\$286
taxes	\$982
miscellaneous	\$300
child care tax credit	-\$100
child tax credit	-\$167

HIGHER THAN THE
PEABODY MEDIAN
HOUSEHOLD INCOME
OF \$54,829

monthly

\$4,812

annually

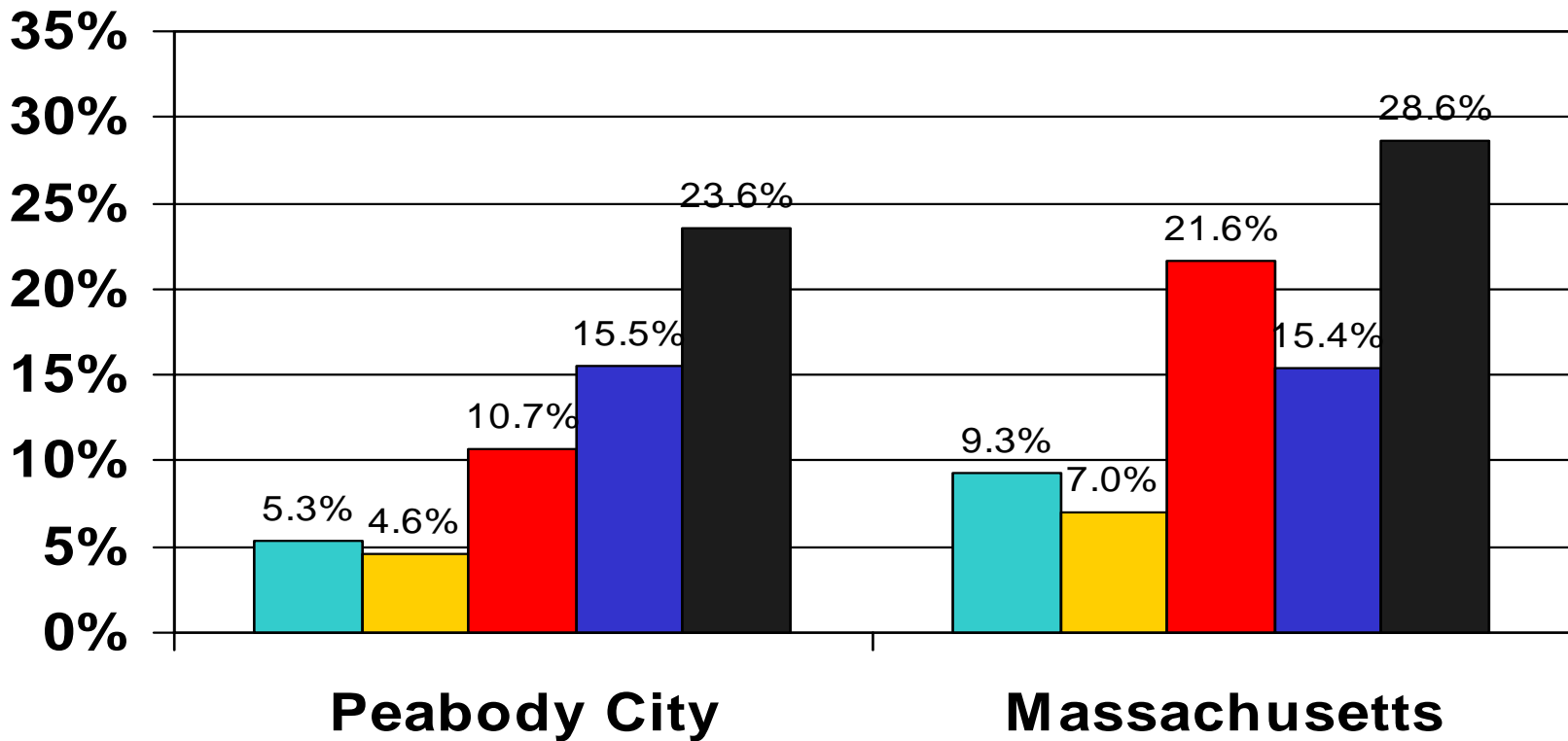
\$57,744



Peabody Housing Market

	1990	2002	Difference
Housing units	18,240	18,898	658
Ave. Monthly rent	2 bedroom= \$750	2 bedroom= \$1,200	+62%
Non-Family households	4,619	5,600	+981
Avg. home sale price		\$309,500	

Poverty Rates by Race

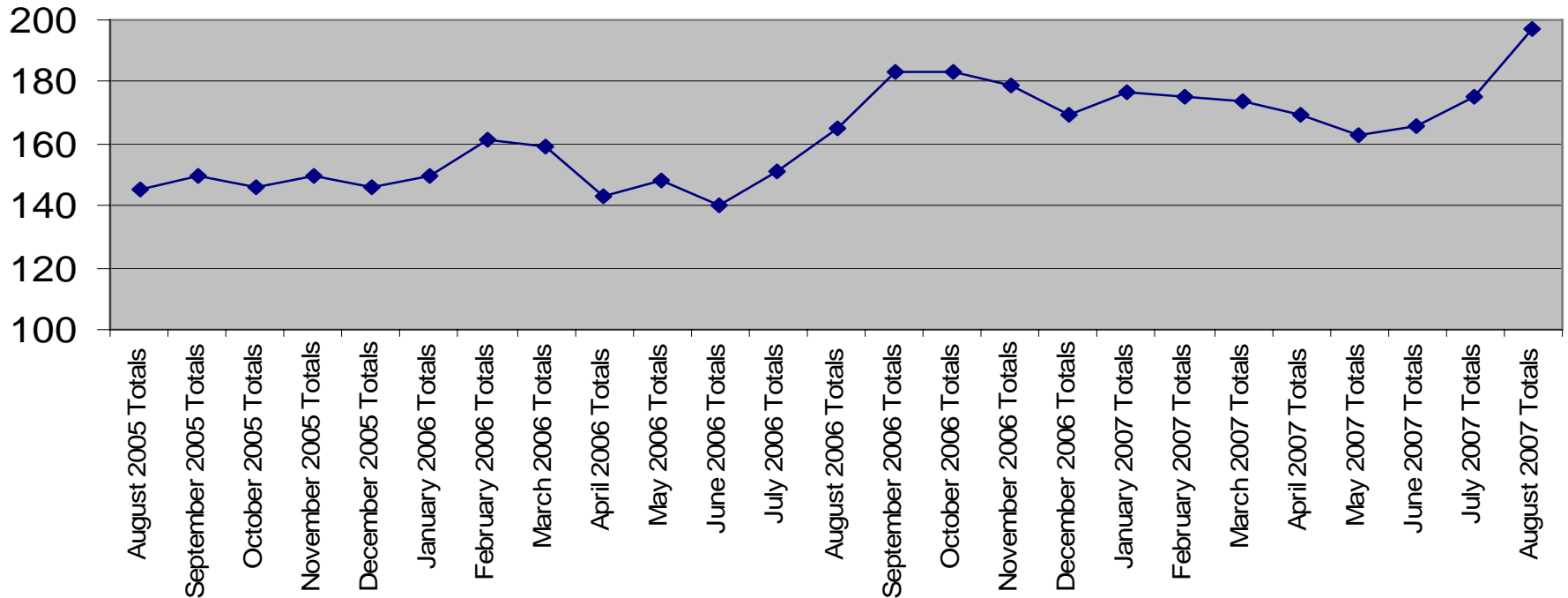


Total **White** **Black** **Asian** **Latino**

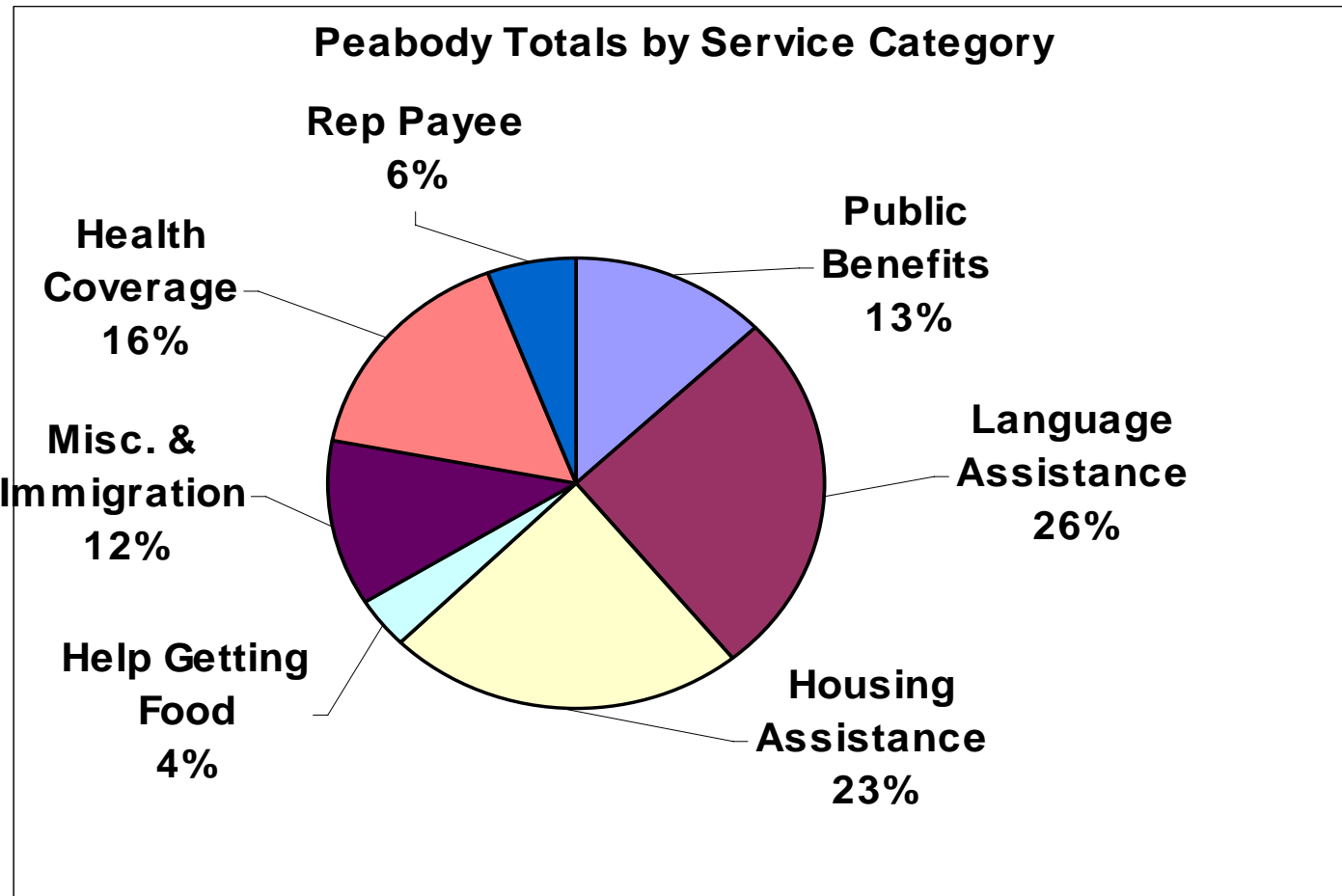
Emergency Assistance Families on the North Shore

**Number of Families with North Shore Address
Prior to Entering Shelter**

42% Increase in Homeless families

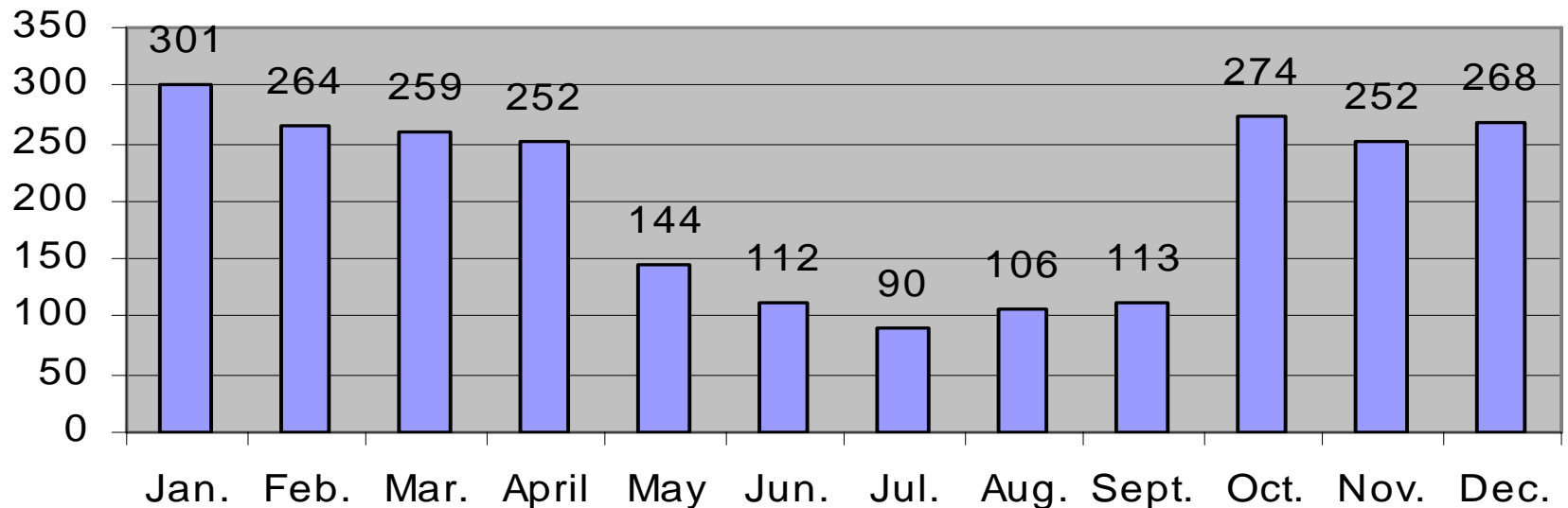


Peabody Residents Served by NSCAP Advocacy



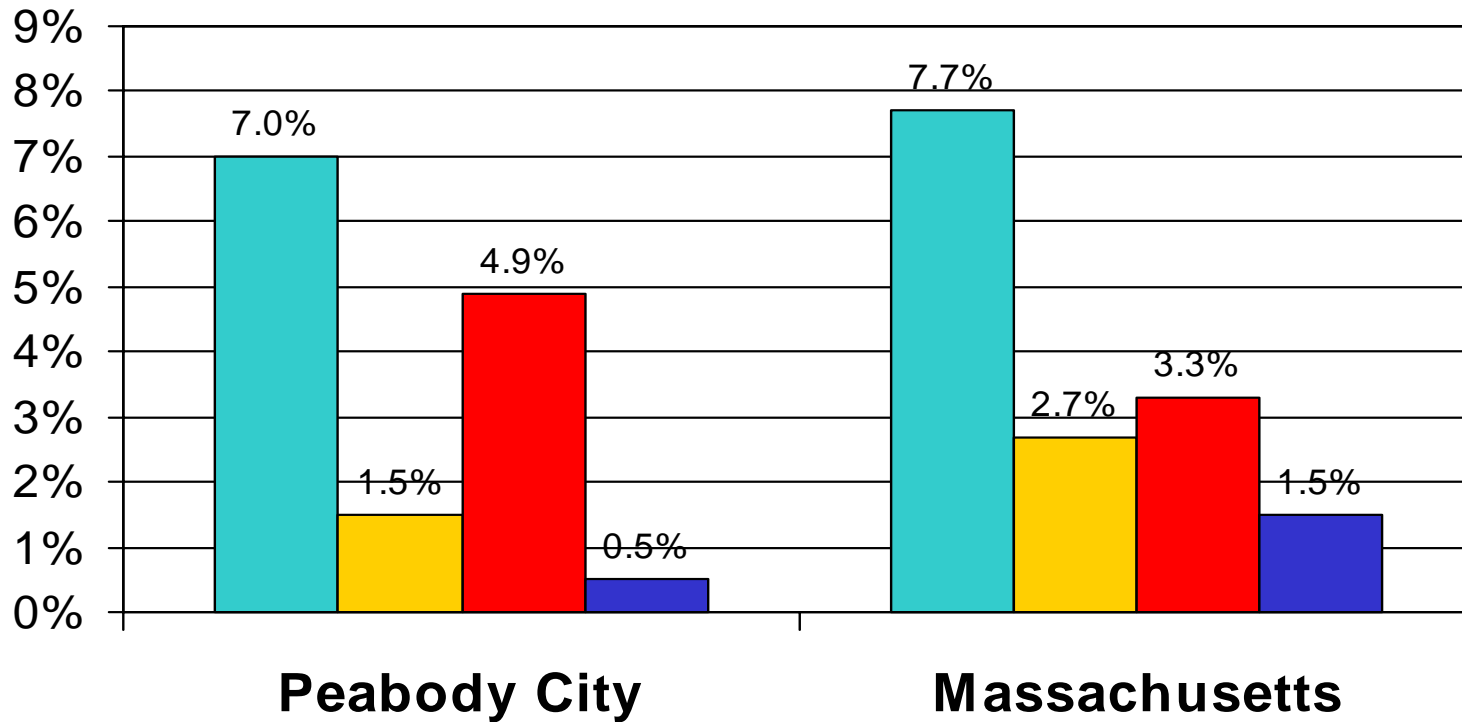
Peabody Residents Served by NSCAP Advocates and Fuel

Amount of Peabody Residents Served by NSCAP's Advocates Per Month in 2007

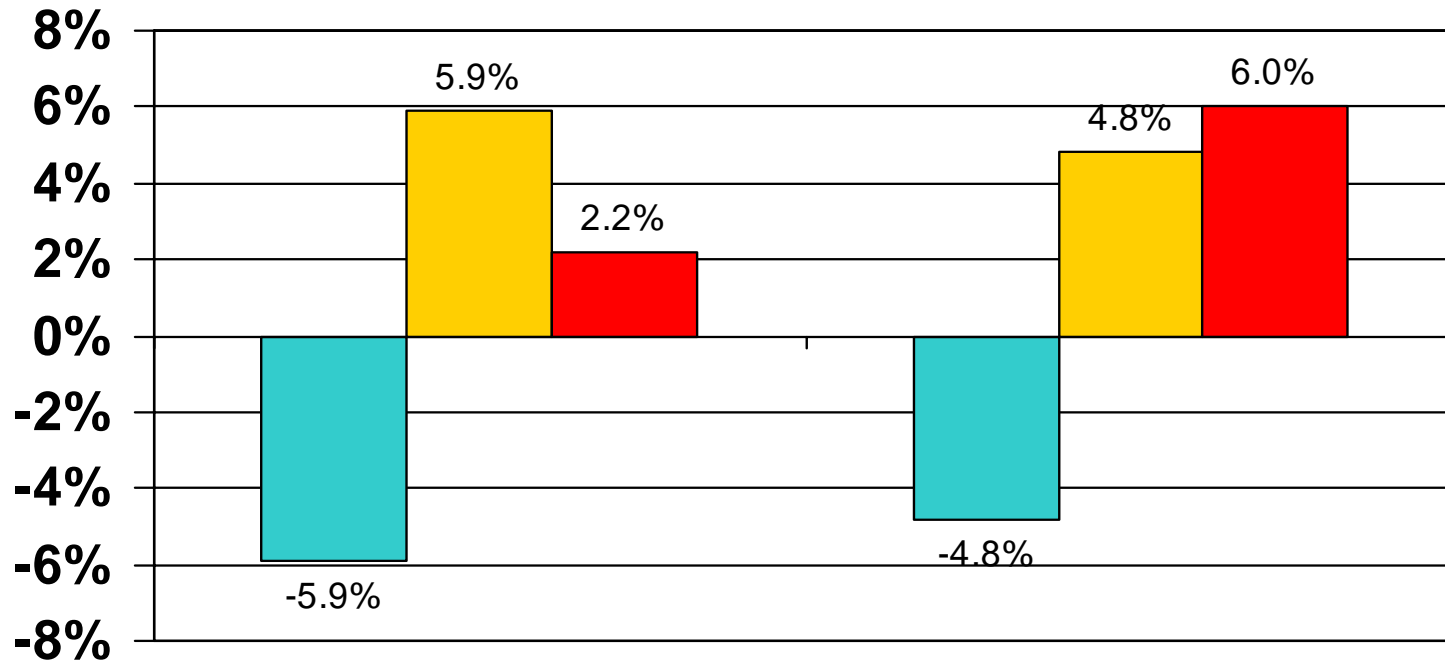


Total: 2,435

Percent of Population over 5 with Limited English Proficiency



Change in Educational Attainment in Peabody from 1990 to 2000



- % without HS diploma
- % with HS diploma or Higher
- % with Bachelor's Degree or Higher



Youth Substance Abuse

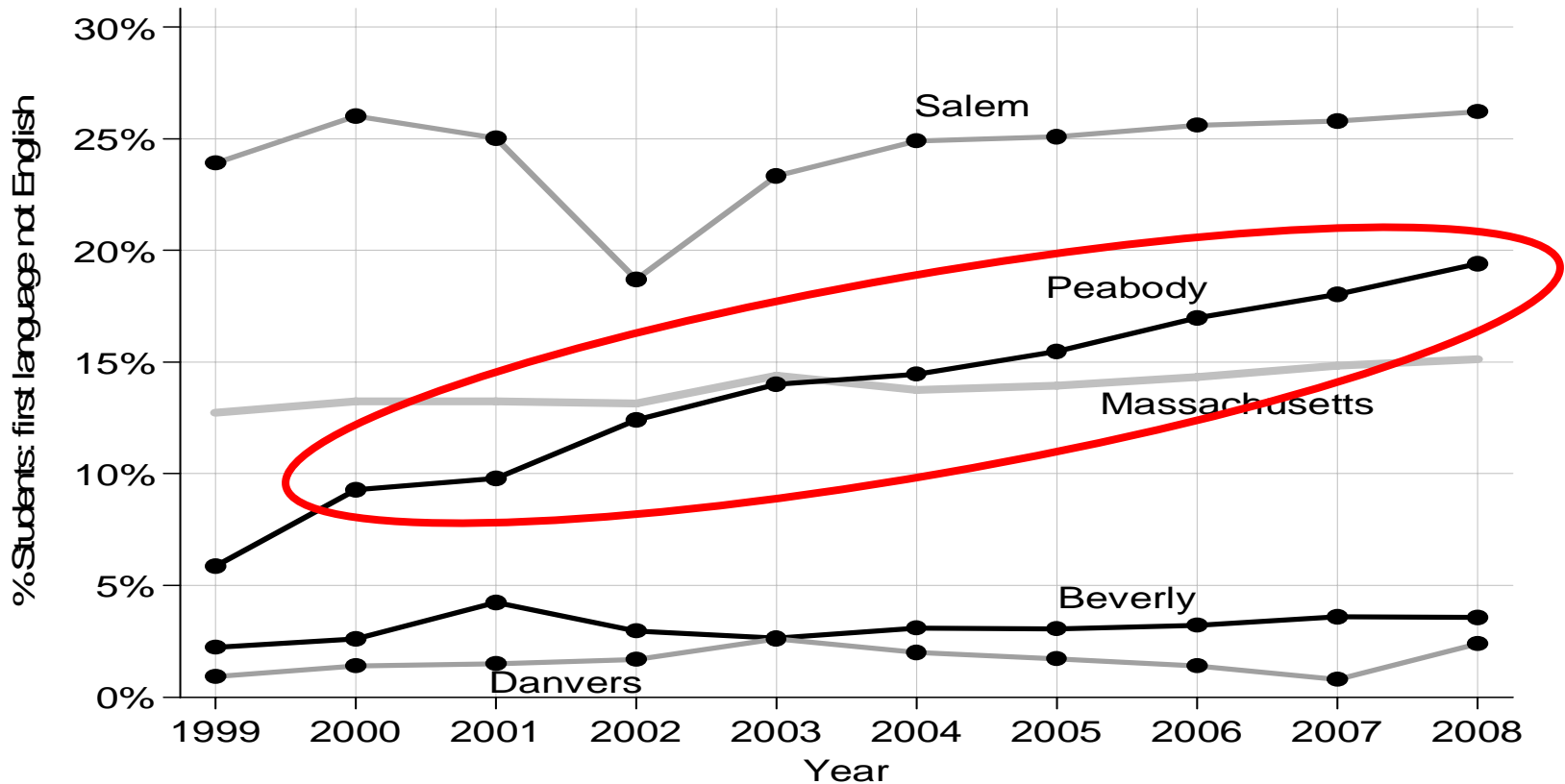
- 15 – 19 Males:
 - Peabody residents hospitalized for drugs and alcohol abuse at rates **202% higher** than state rate
- 15 – 19 Females:
 - Peabody residents admitted to SA treatment programs at rates **90% higher** than state rate
 - Peabody residents hospitalized for drugs and alcohol abuse at rates **427% higher** than state rate
- Substance Abuse Prevention Grant Awarded to Peabody, MA.



The North Shore Becomes a More Diverse Region

- In 2008, 27.2% of North Shore adult students are American-born, while 72.8% are immigrants.
- The largest immigrant groups among enrolled adult learners are people who have emigrated from the Dominican Republic (17.9%), Brazil (15.4%) and Albania (9.3%).
- In 2008, adult education providers in these communities reported having students reflecting the cultures of **19 countries** in addition to the United States and U.S. territories.

North Shore ELL (English Language Learners) Students



Data from the MA. Dept of Education shows the percentage of students (all grades) whose first language is not English. There has been a dramatic increase for Peabody while Salem has stayed at a high level. Beverly and Danvers are relatively unchanged.

Employment Rates Among the Foreign Born Populations of Massachusetts by English-Speaking Proficiency

